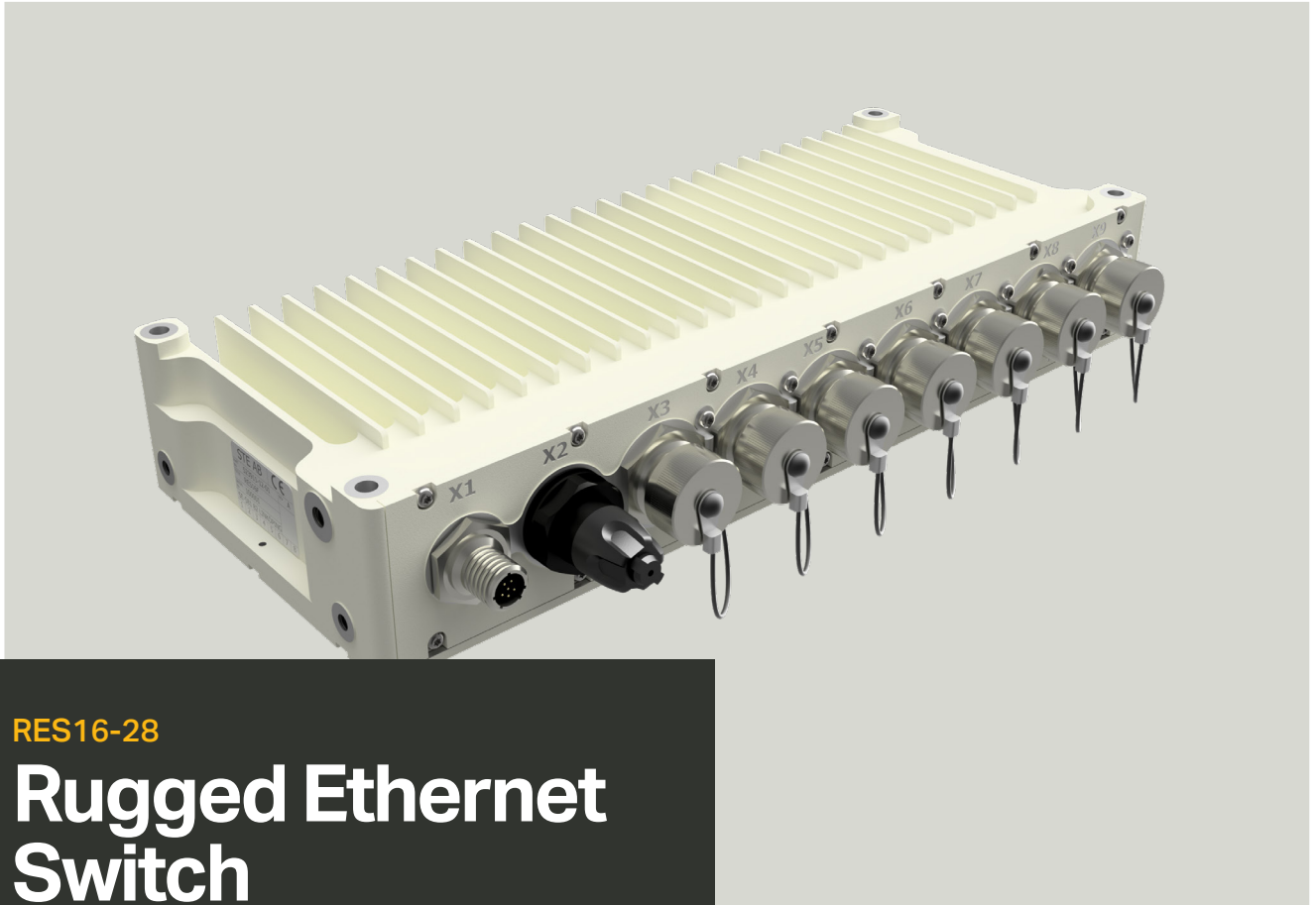




SAAB



RES16-28

Rugged Ethernet Switch

Robust 16-28 Port Gigabit Switch with advanced layer 2/3 capabilities. Engineered for unmatched reliability in the harshest environments, this switch delivers high-performance connectivity. Designed to meet the most demanding military and industrial standards, ensuring secure, mission-critical operations.

Reliable, highly customizable switch platform built into the chipset, offering up to 28 configurable ports, maximum including 4x10 Gb/s fiber. Web-based interface and full software control provide advanced features such as Tunnels, QoS, Firewall, Secure Routing, and encrypted IP-tables.

Designed for mission-critical applications, including C4I, HUMS, and fire control systems, it delivers secure, resilient, high-performance operations in any environment.

Core features:

- L2 to L3 functionality
- 16-28x10/100/1000Base-TX Ethernet
- Web GUI or CLI for configuration
- MIL-STD-810 and MIL-STD-461
- IP65
- Operating temp -40°C to +60°C



SAAB



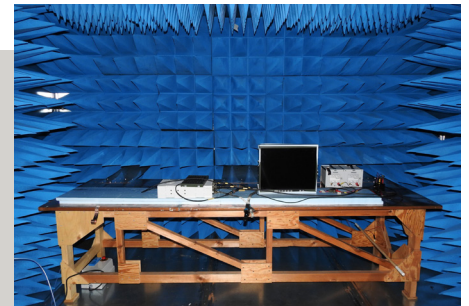
DATA DISTRIBUTION

The RES Ethernet switch family is designed to provide extremely reliable network connections in the most challenging environments. Typically used as central nodes in deployed vehicles for critical applications such as main battle management systems, firewalling or similar applications in connection to external communication devices or distributing digital video of e.g an NGVA compatible network.

RELIABLE OPERATIONS

Our Ethernet switch portfolio includes the most reliable solutions for your critical applications. Built to comply with Mil-STD-461 and MIL-STD-810 and beyond meanwhile delivering full performance.

All our products are ITAR-free. Together with our fully owned IPR and inhouse production we have control. To ensure supplies of today and tomorrow.



FLEXIBLE SOLUTIONS

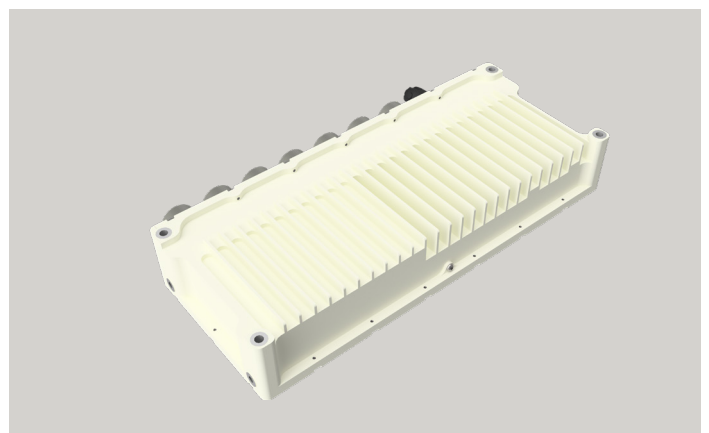
The switch platforms can be supplied in three pre-defined levels of functionality, from layer 2 functionality to complex data control and routing in Layer 3.

The switches possibilities increase further due to the onboard ARM processor, which enables execution of additional software for data package analyze etc.

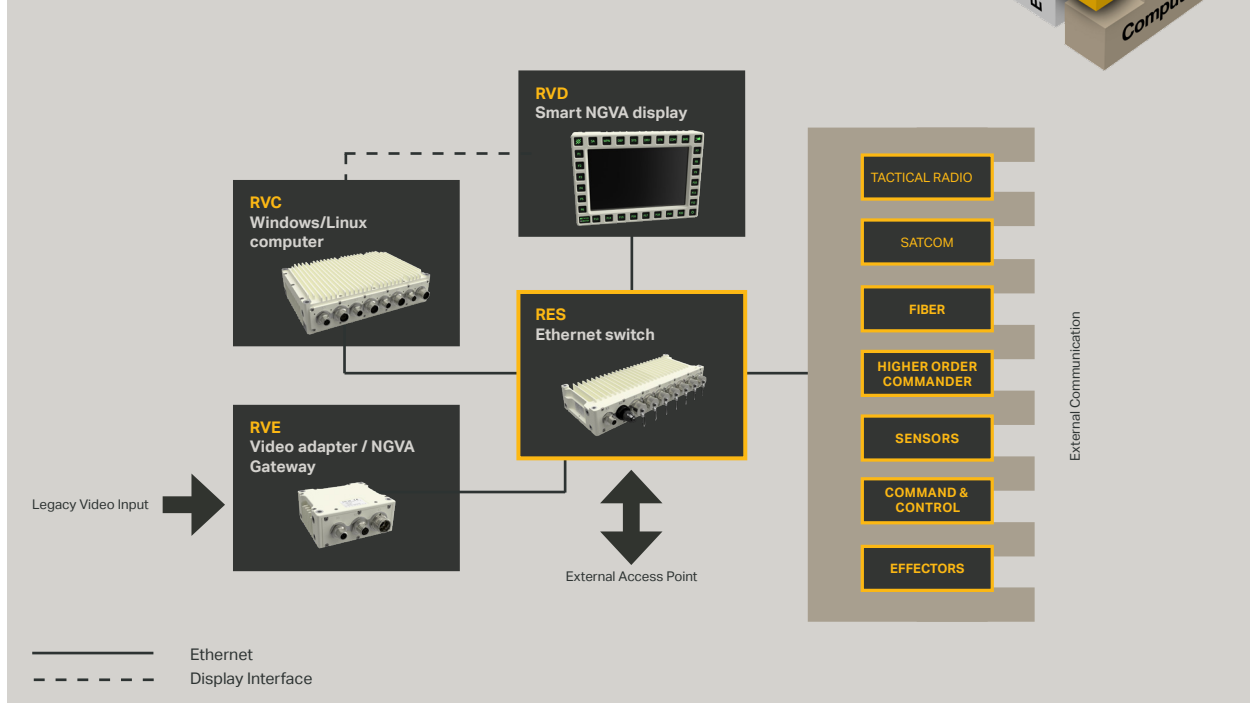
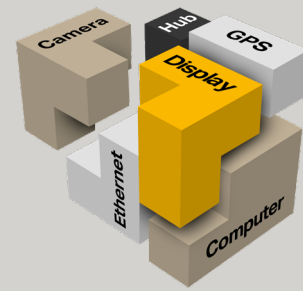
RES16-28 Dimensions

- Height: 59 mm
- Width: 350 mm
- Depth: 144 mm
- Weight: 2.7 kg (approx.)

RES16-28 - Rear view



Saab Tactical Electronics portfolio offers building blocks according to open standards to create your dedicated system.



Specifications – Rugged Ethernet Switch 16-28

Up to 28x10/100/1000BaseT(x) ports incl. 4x1/10Gb/s optical fiber connections	Example of configurable features:
Layer 2 to Layer 3 functions	VLAN (802.11Q and port based)
Web GUI or CLI for configuration	Multicast (IGMP snooping)
Operating temperature: -40°C to +60°C	SNMP v1/v2c/v3
Storage temperature: -40°C to +70°C	Port mirroring
Sealed housing, IP65	Quality of Service
Comply to MIL-STD-810 and MIL-STD-461	IGMP filtering
Power supply according to MIL-STD-1275	Management via SSH
MIL-C-38999 series III connector, Electroless Nickel. Other options available.	Integrated Power Supply
Internal status supervisory and log	DHCP server acc. to RFC2131
See also our product RES8-12 and SRES which offers similar features with extended interfaces in other formats.	

Specifications subject to change without notice.
Company confidentiality: Company unclassified
Defence secrecy: Not classified

Saab Tactical Electronics AB, SE-581 82, Linköping, Sweden
info.ste@saabgroup.com | www.saab.com/ste

