



SAAB



RDPC10

Rugged Portable Display Computer 10"

Built for mission-critical performance, the RPDC10 delivers reliable computing power even under the most severe conditions. Designed for operation in harsh environments, it features a 4-core Intel® i7-1185GRE processor, up to 48 GB RAM, and integrated Intel® Iris® Xe Graphics for high-performance processing and visualization.

Engineered for extreme use, the RPDC10 combines robustness with consistent performance where reliability is non-negotiable. It supports both fixed and semi-fixed installation via an optional docking bracket, and when undocked, operates on its integrated battery for maximum flexibility.

The RPDC10 is qualified for demanding environments, with proven resistance to vibration, shock, moisture, temperature extremes, and electromagnetic interference, in accordance with MIL-STD-810 and MIL-STD-461 standards.

Core features:

- Intel® 11th Gen. Intel® Core™ i7
- Intel® Iris® Xe Graphics
- TPM2.0
- Removable 2,5" SSD disk
- Ruggedized docking station
- MIL-STD-810 and MIL-STD-461
- Operating temp -40°C to +60°C



SAAB



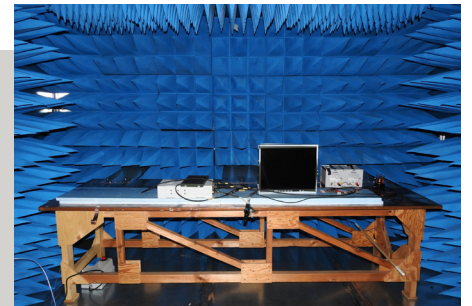
POWERFUL COMPUTING

The Rugged Portable Display Computer is engineered for demanding C2 environments and as a reliable, general-purpose workstation for mission-critical applications such as fire control systems. The RPDC10 can be used as a fixed installation or in a semi-fixed configuration with an optional docking station. Durable, long-life pogo-pin connectors support both cable connections and seamless docking, ensuring robust performance even in harsh operating conditions.

RELIABLE OPERATIONS

Our ruggedized computer portfolio includes the most reliable solutions for your critical applications. Built to comply with MIL-STD-461 and MIL-STD-810 and beyond meanwhile delivering full performance.

Fully ITAR-free and built with our own IP and in-house production, we ensure total control over quality, innovation, and supply—today and tomorrow.



FLEXIBLE SOLUTIONS

Over the years we have developed a design concept that opens up for adaptations to meet our customers exact needs in terms of connector type or specific pinout, additional interfaces or outer casing surface treatment with a minimum of effort from our side.

Contact us to discuss your dedicated needs.

RPDC10 Dimensions

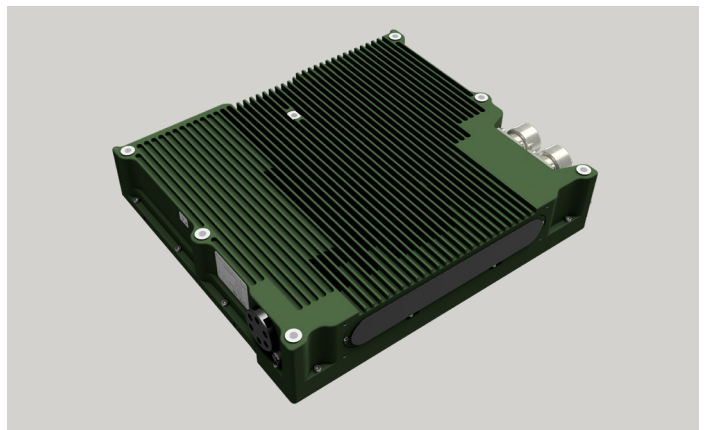
Height: 228 mm

Width: 260 mm

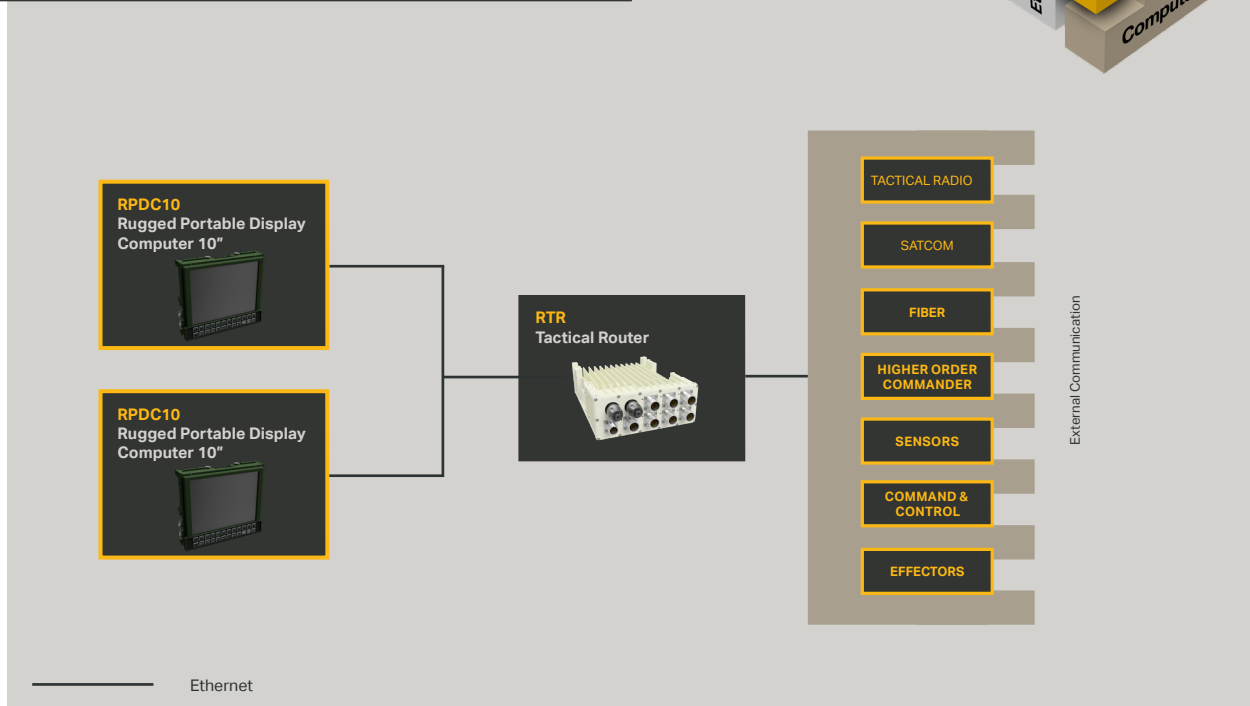
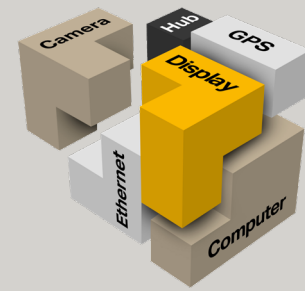
Depth: 55 mm

Weight: 3.6 kg incl battery

RPDC10 - Rear view



Saab Tactical Electronics portfolio offers building blocks according to open standards to create your dedicated system.



Specifications – Rugged Portable Display Computer 10"

Intel® 11th Generation Intel® Core™ i7 family	Operating temperature: -40°C to +60°C
Intel® Core™ i7-1185GRE, 4x 1.8 GHz	Storage temperature: -46°C to +71°C
Intel® Iris® Xe Graphics	6.8 Ah rechargeable Lithium Ion Smart Battery accessible via a hatch
10.4" display; 1024 x 768 pixels, LED-backlight	Comply to MIL-STD-810 and MIL-STD-461
Trusted Platform Module, TPM 2.0	Power input according to MIL-STD-1275
SDRAM 16GB DDR4 (max 48GB)	MIL-C-38999 series III connector, Electroless Nickel
2.5" SSD; SLC/ pSLC/ TLC, up to 2TB	
Built in speakers	
Interface undocked:	Additional Interfaces when docked:
2x USB 2.0 ports	2xCAN, isolated
1x Ethernet port, 10/100/1000Base-TX	1xAudio I/O
2x RS232/RS422 ports	1xDVI-D, cloned
1x Audio in/out	1xUSB 2.0

Specifications subject to change without notice.
 Company confidentiality: Company unclassified
 Defence secrecy: Not classified