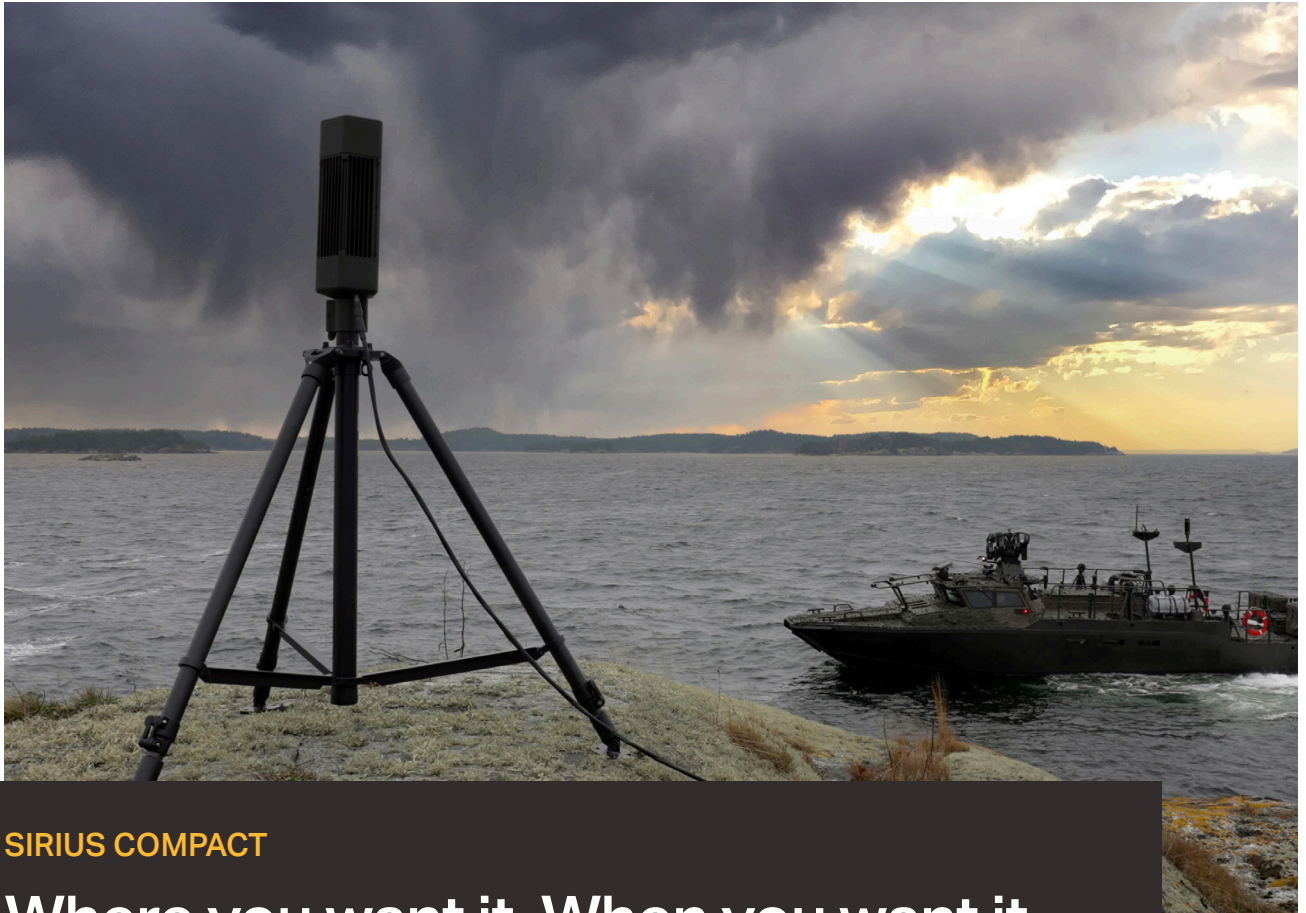




# SAAB



## SIRIUS COMPACT

# Where you want it. When you want it.

Compact passive surveillance for tactical applications

**Sirius Compact** is a family of modular and scalable passive Electronic Warfare (EW) sensors, providing a true force-multiplier by enhancing situational awareness through silent detection, classification and prioritisation of radar and datalink emissions.

### Sirius Compact

A small form factor, lightweight Radar-Electronic Support Measures (R-ESM) sensor that can be rapidly deployed and connected in a network to support tactical operations. Autonomous operation enables assimilation and compilation of intelligence information without storing sensitive data in the sensor. Sirius Compact enables tactical Electronic Warfare across all operational levels, adding a higher level of confidence to situational awareness for decision support.





# SAAB

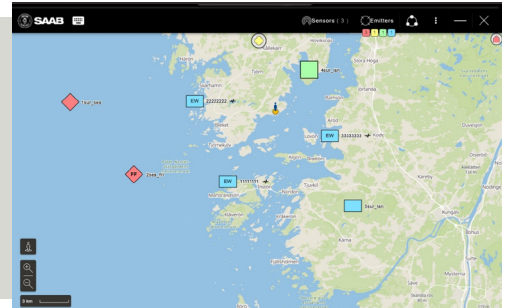


### Scalable and agile

Sirius Compact is an installation and datalink agnostic sensor which can be mounted on a multitude of platforms including drones, vehicles, vessels, masts or man-portable deployments.

### Sharpen your sensors

Sirius Compact enables enhanced situational awareness at all operational levels, either in a stand-alone or networked configuration.



### Features

- Tactical Electronic Support Measures (ESM)
- High precision Direction Finding (DF)
- Geo-location by triangulation
- Real-time emitter classification and prioritisation
- Signal recording for ELINT support
- Intuitive User Interface
- Multi-domain: Air, Land & Sea

### Typical applications

- Complement to multi-sensor systems for Ground Based Air Defence (GBAD), Coastal and Border Surveillance etc.
- Armoured Fighting Vehicle & Combat Boat
- Unmanned Aerial Vehicle & Unmanned Surface Vessel
- Special Operations

### Technical data

- Frequency coverage: 1-18 GHz\*
- Azimuth coverage: 360°
- DF accuracy: < 2° RMS
- Interfaces: Ethernet, 14-32 VDC
- Height: 35-48 cm\* / Diameter: 15-17 cm\*
- Weight: 3.3-5.8 kg\*
- Power: 60 W (typical)
- Positioning: Integrated IMU/GNSS

\*: depending on variant

### Standard accessories

- External GNSS antenna
- Portable masts
- Battery packs
- Ruggedised computers
- Platform interface kits
- Carrying cases and backpacks
- Signature management suite

### One family, all signals, any domain

Sirius is a family of innovative and networked passive sensor systems based on common architecture with a domain specific edge. It provides a complete synergistic capability for Intelligence, Surveillance and Reconnaissance – beyond the scope of individual sensors. Today these systems provide Armed Forces and Intelligence Services around the world with the silent power required to turn signals into knowledge, whilst remaining undetected