



SAAB



RTR

Rugged Tactical Router

Designed for demanding operational environments, our powerful and flexible Rugged Tactical Router delivers extensive processing capacity to support mission-critical communications. It is built to serve as a key enabler for NATO-led operations, allowing forces to securely share situational awareness, sensor data, and effector information at the tactical level.

The Rugged Tactical Router enhances our ruggedized portfolio with more advanced secure data distribution capabilities. Featuring powerful processing and extensive network connections in a compact, rugged format, it ensures reliable performance for virtualization, critical communication, firewalling, and client-server applications.

When integrated with Saab's data-centric solutions for FMN Core services, the Tactical Router forms a robust backbone for distributed applications in cloud-based multi-domain operations.

Core features:

- AMD Ryzen V3C18I 32GBRAM (max 64GB)
- 8 cores/16 threads
- 12x10/100/1000Base-TX Ethernet
- 4x10Gb/s Ethernet fiber ports
- PTPv2/IEEE 1588.v2 support
- TPM2.0
- 20 Gbit/s interconnect to CPU



SAAB



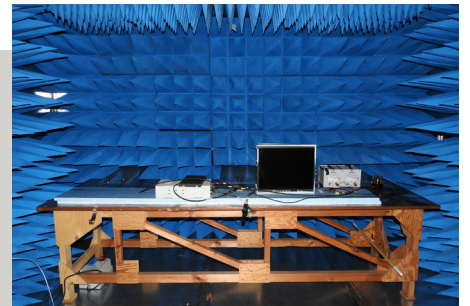
DATA DISTRIBUTION

The RTR is a fully managed Layer 3 Ethernet router built on a highly customizable, embedded modular Linux software architecture. Capable of interconnecting disparate communication systems and tactical radios under varying link conditions into a single, cohesive integrated network. Designed to be able to integrate with data management and cyber security solutions like TacEdge from Saab.

RELIABLE OPERATIONS

Our Ethernet switch portfolio includes the most reliable solutions for your critical applications. Built to comply with MIL-STD-461 and MIL-STD-810 and beyond meanwhile delivering full performance.

Fully ITAR-free and built with our own IP and in-house production, we ensure total control over quality, innovation, and supply—today and tomorrow.



FLEXIBLE SOLUTIONS

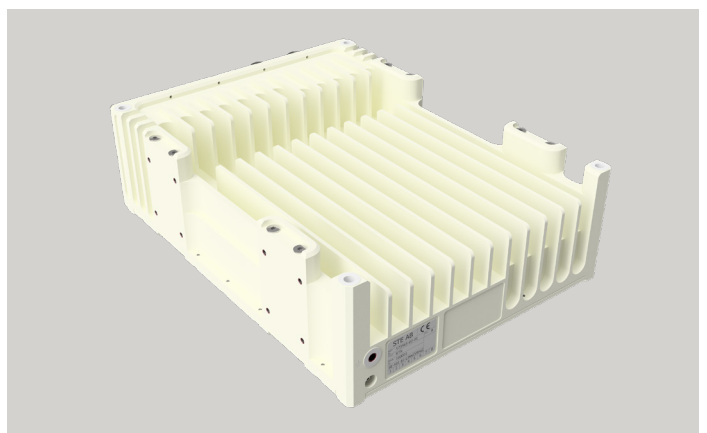
The RTR is an Ethernet router built on a highly customizable, embedded modular Linux software architecture.

Capable of interconnecting disparate communication systems and tactical radios under varying link conditions into a single, cohesive integrated network.

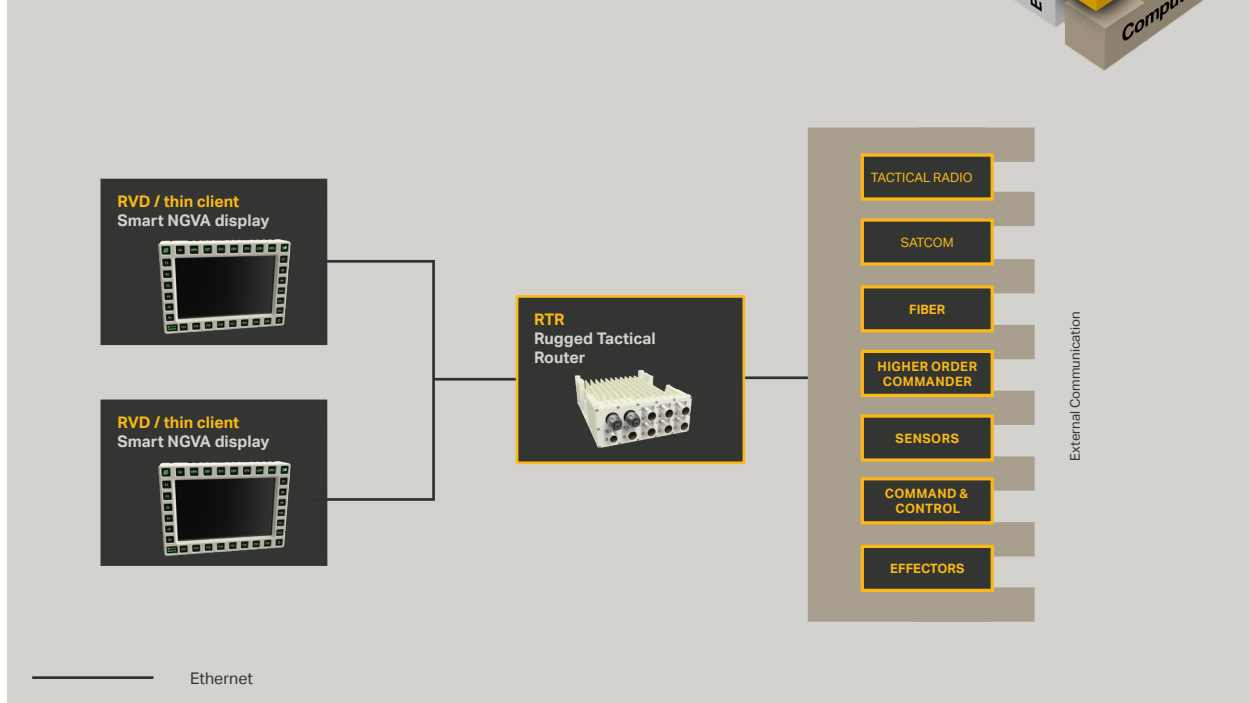
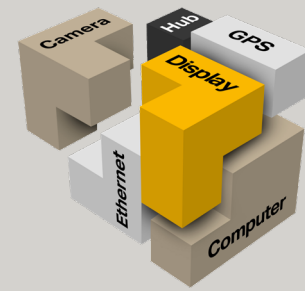
RTR Dimensions

- Height: 88.5 mm
- Width: 220 mm
- Depth: 294 mm
- Weight: TBD

RTR - Rear view



Saab Tactical Electronics portfolio offers building blocks according to open standards to create your dedicated system.



Specifications – Rugged Tactical Router

CPU Subsystem	Switch Subsystem:
AMD Ryzen V3C18I with 32GB DDR5 (max 64GB)	L2/L3 (static routing) managed switch
8 cores / 16 threads	Switch-core with 128Gbit/s capacity
NVMe SSD from 320G pSLC	Up to 4x1/10G fiber ports
TPM 2.0	Up to 12x10/100/1G switched copper ports (38999-type)
2x10 Gbit/s backplane to switch	PTPv2/IEEE 1588.v2
RS232 configuration port	
2 dedicated 10/100/1G copper ports	
Power supply according to MIL-STD-1275	
General:	
Operating temperature: -40°C to +60°C	Power supply according to MIL-STD-1275
Storage temperature: -40°C to +70°C	Sealed housing, IP65
Comply to MIL-STD-810 and MIL-STD-461	
MIL-C-38999 series III connector, Electroless Nickel. Other options available	

Specifications subject to change without notice.
Company confidentiality: Company unclassified
Defence secrecy: Not classified

Saab Tactical Electronics AB, SE-581 82, Linköping, Sweden
info.ste@saabgroup.com | www.saab.com/ste



SAAB