

Gripen E

The Game Changer.

Designed to defeat any adversary. Made for forward-thinking air forces, Gripen E incorporates cutting-edge technologies. The latest systems, sensors and weapons ensuring combat advantage, delivering Air Superiority in highly contested environments. Gripen E re-defines the rules of the game.

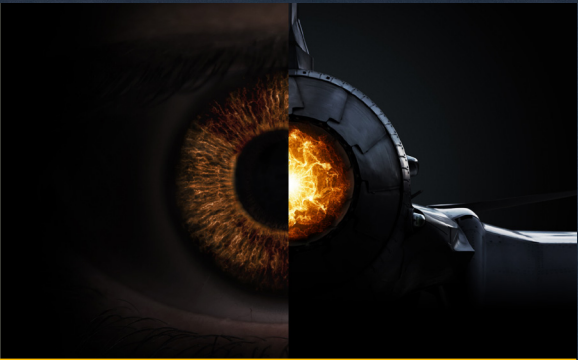
[Learn more at saab.com/gripen-e](http://saab.com/gripen-e)



SAAB

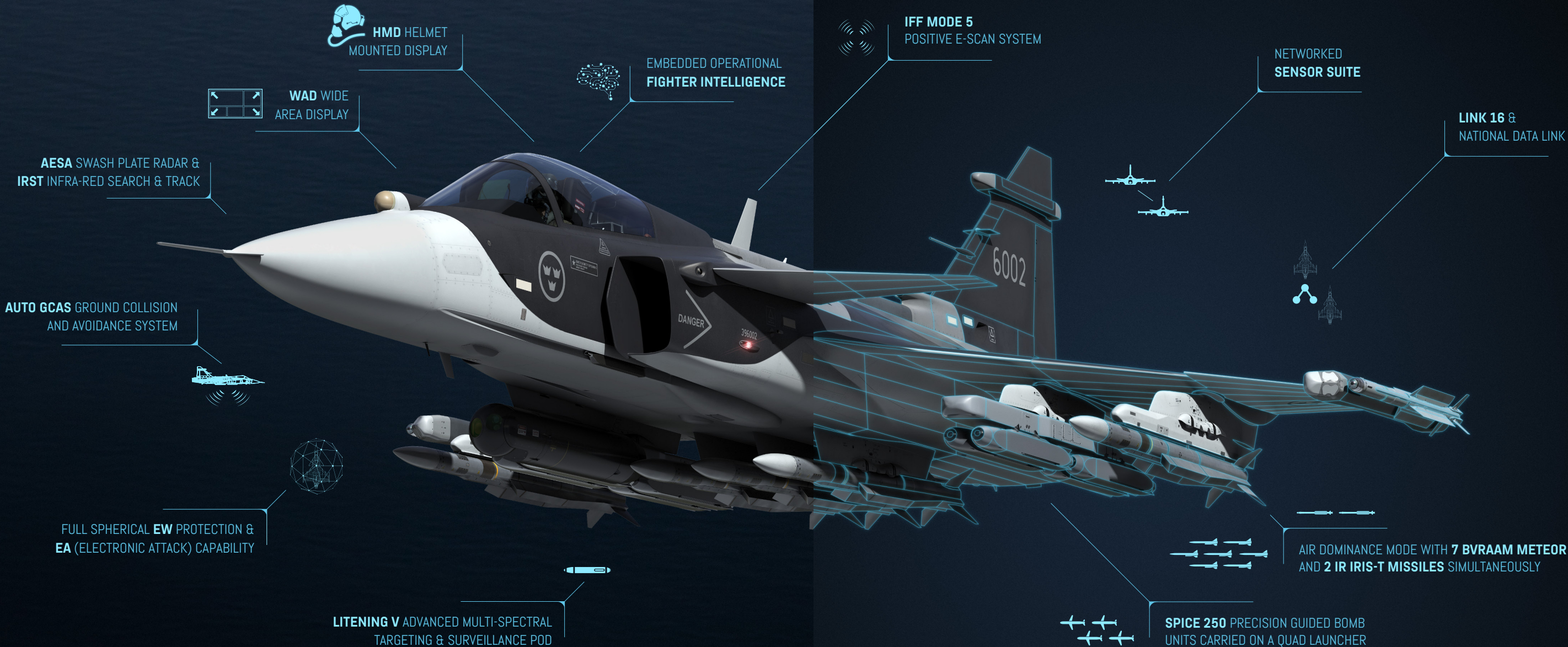
Be in total sync

For pilots, excellent Battlespace Awareness, state of the art sensor fusion and embedded Fighter Intelligence functionality make Gripen the smartest air superiority fighter available today. The pilot, in combination with the aircraft and weapons system, act as one – delivering superior fighting capabilities.



Be adaptable

The world is constantly changing and Gripen is built on the very principles of change and adaptability. The only way to win is to constantly deliver combat relevance, both now and way in the future.



Be the fastest off the ground

Air power is also in the numbers and the more fighters you have available for the fight is crucial. The ability to take-off, engage and return to base to rapidly prepare for the next mission is decisive. Being born and bred to operate from remote airstrips and roads requiring minimal support personnel and equipment, Gripen can quickly deploy to defend contested environments.



Be collaborative

Collaboration is important to succeed. It is in the Gripen DNA to communicate, collaborate, innovate and lead. Gripen allows the pilot to easily collaborate with other forces and win the fight in any environment.





Human Machine Collaboration

Human Machine Collaboration (HMC) is essential in future Air Superiority, combining an embedded operational Fighter Intelligence (FI) capability and Decision Support with the future oriented cockpit design. The pilot and the aircraft systems operate seamlessly together, collaborating to achieve mission success."

- Wide Angle HUD & HMD
- Fused information on WAD
- 3D decision support
- Pilot High-level tasking



Dominate the Electronic Battlespace

With its 360 deg spherical coverage Electronic Warfare (EW) suite and Electronic Attack (EA) capability, Gripen E can safely enter and exit highly contested, hostile and high threat environments and deliver Air Supremacy, performing both defensive and offensive missions with very high survivability.

- Defensive EW capabilities
- Offensive EW capabilities



Adapt Fast & Stay Operationally Relevant

The key to modern warfare is rapid adaptability – maintaining technological superiority over challenging adversaries. Gripen E's innovative avionics system delivers rapid, continuous operational relevance and enhanced combat effectiveness using the latest technology.

- Modular avionics – Separated architecture
- Rapid upgrades – Software & hardware



Decisive Information Advantage

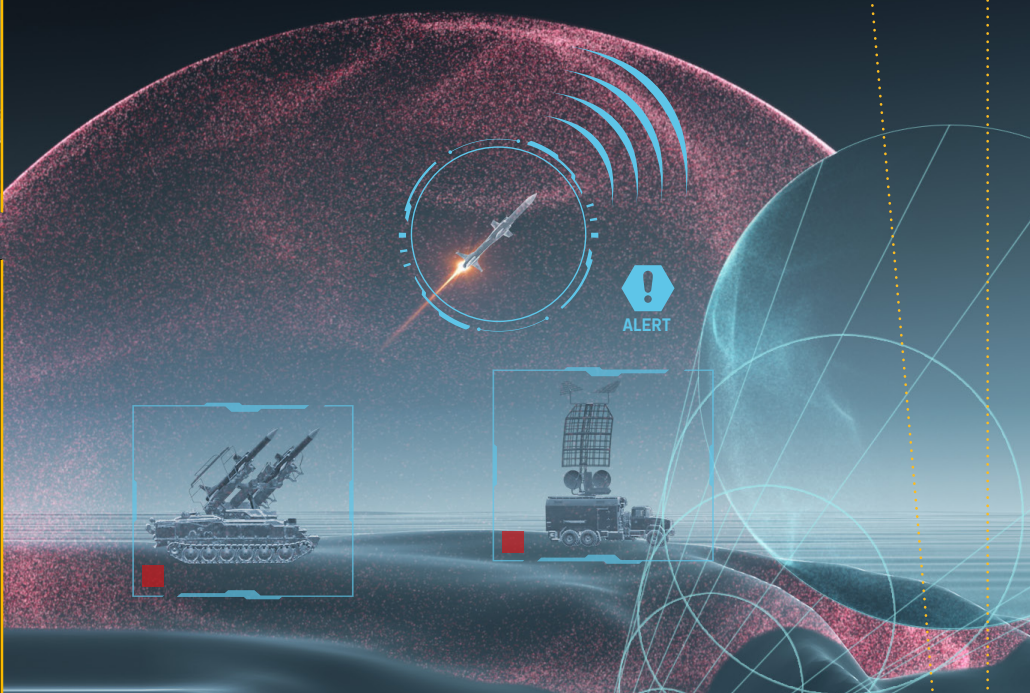
A suite of tactical sensors, including AESA radar,IRST passive sensor and advanced EW suite, deliver cross-sensor data gathering and fusion, and using datalink capabilities an unprecedented level of networked sensor results. Information is quickly analysed and shared in real-time enabling critical decisions to be made and resulting actions rapidly executed, thereby ensuring tactical superiority.

- Fully networked sensor fusion
- Automatic multi-sensor suite integration and tasking
- Decision Support and Fighter Intelligence
- Link 16, National datalink via DA-CAS (VMF/VDL)



RWR - Radar Warning Receiver

Confirms the location of signals coming from any radar on the ground, at sea or in the air that is searching for Gripen.



ECM - Electronic Counter-Measures

Gripen's Electronic Warfare system deceives enemy tracking and targeting radars, either jamming them or creating multiple ghost targets, thereby preventing the real Gripen from being targeted.



MAWS - Missile Approach Warner

Alerts about the approach of missiles fired in the direction of Gripen.

METEOR BVRAAM

Latest generation BVR missile with high energy and long range ensuring larger No Escape Zone (NEZ) and high Pkill performance.

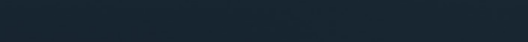


Data Link / Link 16 / Tactical Fighter link

Datalink capabilities ensuring real-time Information superiority and shared fused sensor data rapid decisions / action execution, thereby ensuring tactical superiority.

IFF - Identification Friend or Foe

Identifies and confirms which are friendly and which are non-friendly forces.



SPICE 250

SPICE is a new generation stand-off Precision Guided Munition. Carried on a quad-launcher, SPICE 250 is an ideal air-to-surface weapon to support targeted ground precision attack missions.

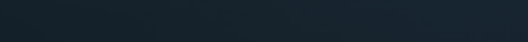
Support to Ground Forces - CAS / GAAI

Close Air Support/Ground Assisted Air Interdiction support via Digital Aided CAS systems onboard such as VMF, Link-16 and real time video link (VDL)



ISR - Intel., Surveillance, Reconnaissance

360 degrees active and passive sensors provide unique collaborative battlefield Situational Awareness.



IRIS-T WVRAAM

Latest advanced WVR missile ideally suited to support high off-boresight engagements complementing Gripen's Helmet Mounted Display (HMD) capabilities to ensure the pilot can always keep the enemy in his sights.

Chaff & Flare expendables / Decoys

Extensive onboard passive / active expendables used to deceive missiles guided by heat or radar signatures or decoys that fool enemy fire control radars.



Lethality – Choose your weapon

Gripen E has 10 hard-points, offers the best in class modern weapons sourced globally and has an unrivalled ease of integration for new weapons allowing you to choose your preferred weapons. Air Supremacy is achieved with the ability to carry up to 7 Meteor BVRAAMS and 2 WVR IRIS-T missiles.

- Modern International A/A & A/G weapons inc e.g. Meteor, IRIS-T, GBUs/SDBs and misc (stand-off) missiles
- Targeting, Electronic Attack Jammer & Recce Pods
- Electronic Defence inc RWR, MAWS, expendables & Decoys



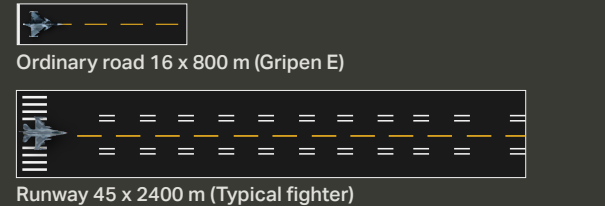
Superiority of Gripen with Meteor

Very high Probability of Kill (Pkill) provided through excellent missile end game kinematic performance. Successful high energy guided missile shots throughout the fight – "Fox 2" and "Fox 3" firings at non-optimal launch speeds. For a No-Escape Zone (NEZ) engagement, Meteor kinematic range is approximately 3 times greater than current Medium Range Air-to-Air Missiles (MRAAM) in the head-on sector and approximately 6 times greater in the rear sector.



Gripen E is born to be airborne

Flight operations secured by ease of maintenance and high availability. Gripen E can operate in extreme climates and from austere dispersed and unprepared road bases or airstrips. Air-to-air missions; re-fueled and re-armed <15 minutes ensures rapid re-engagement.



Maximum Force Readiness

From the outset Gripen has been designed for high availability and ease of maintenance. Gripen availability and maintainability translates into more aircraft in the air, enabling air superiority.





Be
Independent.

Sweden has a long history of a neutrality as a foundation stone for independence. Sweden makes its own choices and decides for itself. With this in mind, Gripen has been designed in compliance with international military standards to meet NORAD obligations, be fully NATO compatible / interoperable and flexible enough to be adapted to your nation's needs. If you want freedom and true independence of choice – choose Gripen.

Learn more: Scan the QR-code or visit
saab.com/markets/canada/gripen-for-canada



SAAB