



SAAB



NRES10

Rugged Ethernet Switch 10

Designed for reliable operation in the harshest environments, our rack-mountable, high-performance 10-port Gigabit switch provides a robust networking backbone for demanding vehicle and mission systems. Featuring Power over Ethernet (PoE) and support for PTPv2 / IEEE 1588, it enables precise time synchronization and dependable connectivity for critical applications.

Compatible with DEF STAN 23-09 GVA and STANAG 4754 NGVA, the switch integrates seamlessly into modern vehicle architectures with 10 × 1 Gb/s interfaces and optional 10 Gb/s fiber for scalable bandwidth.

A web-based interface and full control of the integrated software enable advanced features such as QoS, firewall functionality, secure routing, and protected IP-based communication — delivering reliable, low-latency performance for mission-critical systems including C4I, HUMS, and fire control applications.

Core features:

- L2 to L3 functionality
- 4xPoE, IEEE 802.3bt, max 210W (up to 90W/port)
- IEEE1588 Precision Time Protocol
- 10x10/100/1000Base-TX Ethernet
- MIL-STD-810 and MIL-STD-461
- Operating temp -40°C to +60°C



SAAB



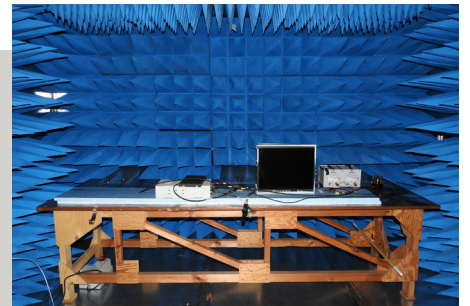
DATA DISTRIBUTION

The NRES Ethernet switch family is designed to provide extremely reliable network connections in the most challenging environments. Typically used as central nodes in deployed vehicles for critical applications such as main battle management systems, firewalling or similar applications in connection to external communication devices or distributing digital video of e.g an NGVA compatible network.

RELIABLE OPERATIONS

Our Ethernet switch portfolio includes the most reliable solutions for your critical applications. Built to comply with MIL-STD-461 and MIL-STD-810 and beyond meanwhile delivering full performance.

All our products are ITAR-free. Together with our fully owned IPR and inhouse production we have control. To ensure supplies of today and tomorrow.



FLEXIBLE SOLUTIONS

The switch platforms can be supplied in three pre-defined levels of functionality, from layer 2 functionality to complex data control and routing in Layer 3.

NRES Dimensions

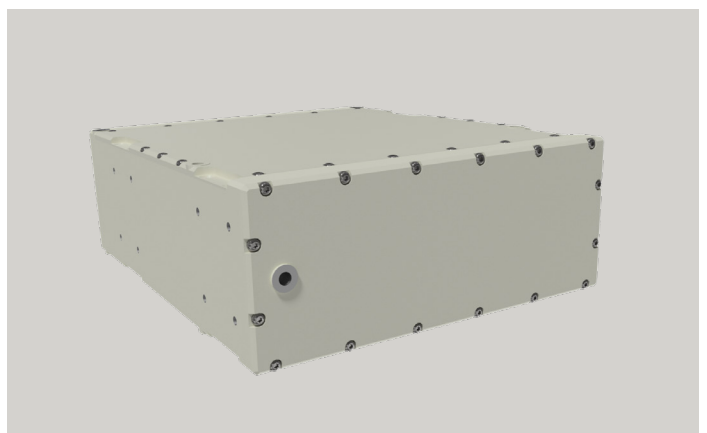
Height: 88 mm (2U)

Width: 220 mm

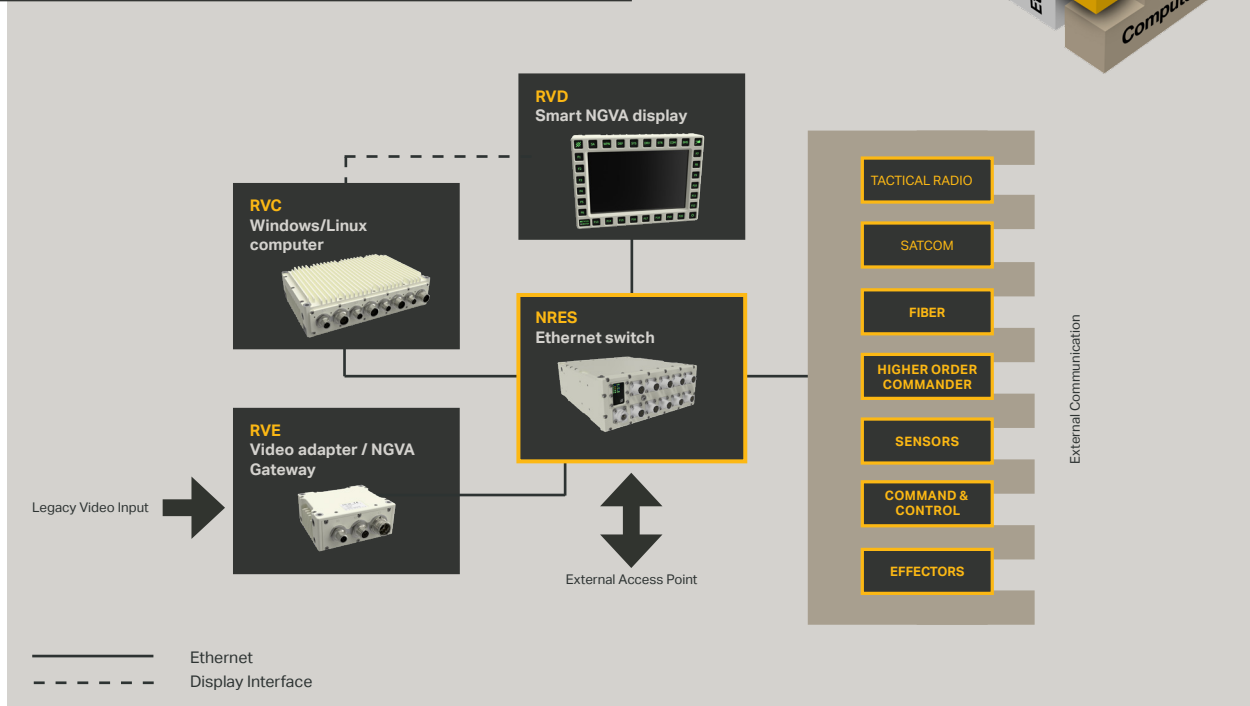
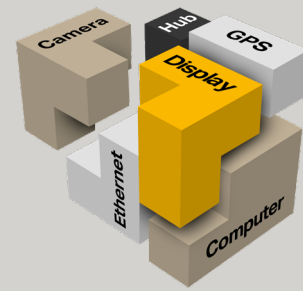
Depth: 282 mm (incl. connector)

Weight: TBD

NRES - Rear view



Saab Tactical Electronics portfolio offers building blocks according to open standards to create your dedicated system.



Specifications – Rugged Ethernet Switch 10

10x10/100/1000BaseT(x) ports	Example of configurable features:
4x PoE, IEEE 802.3bt, max. 210 W, each port up to 90 W, each port up to 90 W	L2 - L3 SW feature set
IEEE1588 Precision Time Protocol	L3 Forwarding
NGVA compatible, STANAG4754	DHCP (opt 82)
Operating temperature: -40°C to +60°C	uPnP
Storage temperature: -40°C to +71°C	ACL (static)
Half 19" rack mounting	VLAN (802.1Q and port based)
Web GUI or CLI for configuration	Multicast (IGMP snooping)
Power supply according to MIL-STD-1275	Per-port data rate policer
Sealed housing, IP65	Flexible link aggregation
Comply to MIL-STD-810 and MIL-STD-461	STP/RSTP (IEEE 802.1w)
D38999 Tin-zinc plated connectors	10Gb/s fiber ports can optionally be configured
	Additional copper ports

Specifications subject to change without notice.
Company confidentiality: Company unclassified
Defence secrecy: Not classified